

COMPANY PROFILE

With great admiration, we present MK Industries, a visionary venture established in 2017 by the dynamic duo, Mr. Lalit Madan and Mr. Akhil Khatri. Drawing upon Mr. Lalit's extensive two-decade experience in the furniture industry and Mr. Akhil's relentless hard work and enthusiasm, they embarked on a mission to revolutionize the furniture industry.

We pride ourselves on our commitment to innovation and customer satisfaction. Our dedication has earned us a reputation for excellence within the industry. We are deeply grateful for the trust placed in us by our esteemed customers who have chosen MK Industries as their preferred partner. Our team is committed to providing customized solutions to meet your specific needs. Whether it's developing unique designs or molds tailored to your preferences, we go the extra mile to ensure your satisfaction.

At MK Industries, we specialize in crafting high-quality lounge chair shells with PU molded foam seats and backs, as well as airport seating shells, PU armrests, and adjustable armrests for both the furniture and automobile industries. Our range of furniture is not only economical but also incredibly comfortable and of the highest quality. We take pride in our ability to develop custom molds and designs to meet the specific needs of our clients. Leveraging our state-of-the-art high-pressure machines and skilled workforce, we are capable of delivering exceptional products that meet the highest standards of quality.

Join us on this exciting journey as we redefine the furniture industry with our exceptional products and unparalleled dedication to customer satisfaction. Together, let's create spaces that inspire comfort, style, and functionality like never before!

We invite you to explore our comprehensive catalog and envision how our products can fulfill all your demands.

Experience the SITZO Chairs difference today!



DOLPHIN PU Chair

Code No.: LC-01





Dimension : 700 X430 X440mm (Width X Height X Seat Depth)
Body : The body is made of MS frame & PU foam is moulded over it.
Foam : Moulded foam has a density of 45kg/m³ (approx)
Packing Size : 2 pcs/box

ZARA PU Chair

Code No.: LC-02





Dimension : 605 X405 X435mm (Width X Height X Seat Depth)
Body : The body is made of MS frame & PU foam is moulded over it.
Foam : Moulded foam has a density of 45kg/m³ (approx)
Packing Size : 2 pcs/box

JACK PU Chair
Code No.: LC-03





Dimension : 605 X390 X430mm (Width X Height X Seat Depth)
Body : The body is made of MS frame & PU foam is moulded over it.
Foam : Moulded foam has a density of 45kg/m³ (approx)
Packing Size : 2 pcs/box





BAR PU Chair

Code No.: LC-04



- Dimension : 420 X180 X340mm (Width X Height X Seat Depth)
Body : The body is made of MS frame & PU foam is moulded over it.
Foam : Moulded foam has a density of 45kg/m³ (approx)
Packing Size : 5 pcs/box

EXPERIENCE THE LUXURIOUS SEATING



STAR PU Chair

Code No.: LC-05



- Dimension : 570 X450 X440mm (Width X Height X Seat Depth)
Body : The body is made of MS frame & PU foam is moulded over it.
Foam : Moulded foam has a density of 45kg/m³ (approx)
Packing Size : 2 pcs/box

AMYRA PU Chair

Code No.: LC-06



- Dimension : 625 X490 X405mm (Width X Height X Seat Depth)
- Body : The body is made of MS frame & PU foam is moulded over it.
- Foam : Moulded foam has a density of 45kg/m³ (approx)
- Packing Size : 2 pcs/box



SINTARA PU Chair

Code No.: LC-07



Dimension : 720 X440 X495mm (Width X Height X Seat Depth)
Body : The body is made of MS frame & PU foam is moulded over it.
Foam : Moulded foam has a density of 45kg/m³ (approx)
Packing Size : 2 pcs/box



SAPPHIRE PU Chair

Code No.: LC-08





- Dimension : 645 X370 X425mm (Width X Height X Seat Depth)
 Body : The body is made of MS frame & PU foam is moulded over it.
 Foam : Moulded foam has a density of 45kg/m³ (approx)
 Packing Size : 2 pcs/box



TOLIDO PU Chair

Code No.: LC-09



- Dimension : 750 X475 X475mm (Width X Height X Seat Depth)
Body : The body is made of MS frame & PU foam is moulded over it.
Foam : Moulded foam has a density of 45kg/m³ (approx)
Packing Size : 2 pcs/box



LUV PU Chair

Code No.: LC-10



Dimension : 790 X400 X515mm (Width X Height X Seat Depth)
Body : The body is made of MS frame & PU foam is moulded over it.
Foam : Moulded foam has a density of 45kg/m³ (approx)
Packing Size : 2 pcs/box



TERRANO PU Chair

Code No.: LC-11



- Dimension : 630 X 435 X 445mm
(Width X Height X Seat Depth)
- Body : The body is made of MS frame & PU foam is moulded over it.
- Foam : Moulded foam has a density of 45kg/m³ (approx)
- Packing Size : 2 pcs/box



KING PU Chair

Code No.: LC-12



- Dimension : 680 X600 X425mm
(Width X Height X Seat Depth)
- Body : The body is made of MS frame & PU foam is moulded over it.
- Foam : Moulded foam has a density of 45kg/m³ (approx)
- Packing Size : 3 pcs/box

QUBA PU Chair

Code No.: LC-13



- Dimension : 730 X440 X505mm (Width X Height X Seat Depth)
Body : The body is made of MS frame & PU foam is moulded over it.
Foam : Moulded foam has a density of 45kg/m³ (approx)
Packing Size : 2 pcs/box







DAYTON PU Chair

Code No.: LC-14



Dimension : 780 X390 X485mm (Width X Height X Seat Depth)
Body : The body is made of MS frame & PU foam is moulded over it.
Foam : Moulded foam has a density of 45kg/m³ (approx)
Packing Size : 2 pcs/box

SHINE PU Chair

Code No.: LC-15





Dimension : 630 X385 X440mm (Width X Height X Seat Depth)
 Body : The body is made of MS frame & PU foam is moulded over it.
 Foam : Moulded foam has a density of 45kg/m³ (approx)
 Packing Size : 2 pcs/box



BRIDGE PU Chair

Code No.: LC-16





Dimension : 570 X390 X455mm (Width X Height X Seat Depth)
 Body : The body is made of MS frame & PU foam is moulded over it.
 Foam : Moulded foam has a density of 45kg/m³ (approx)
 Packing Size : 2 pcs/box

SYDNEY L/B & H/B PU Chair





Code No.: LC-18



Dimension : 670 X620 X415mm (Width X Height X Seat Depth)
Body : The body is made of MS frame & PU foam is moulded over it.
Foam : Moulded foam has a density of 45kg/m³ (approx)
Packing Size : 2 pcs/box



Dimension : 690 X440 X435mm (Width X Height X Seat Depth)
Body : The body is made of MS frame & PU foam is moulded over it.
Foam : Moulded foam has a density of 45kg/m³ (approx)
Packing Size : 2 pcs/box

QUADRO PU Chair

Code No.: LC-19





Dimension : 625 X405 X435mm (Width X Height X Seat Depth)
Body : The body is made of MS frame & PU foam is moulded over it.
Foam : Moulded foam has a density of 45kg/m³ (approx)
Packing Size : 2 pcs/box

HEXA PU Chair

Code No.: LC-20



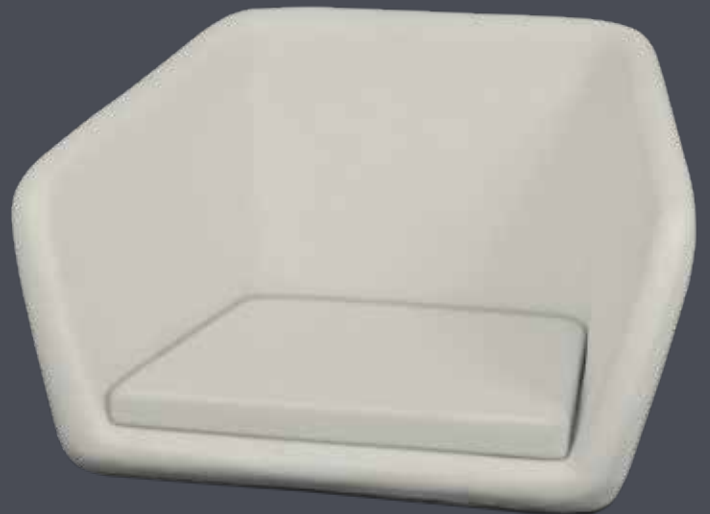


Dimension : 840 X410 X475mm (Width X Height X Seat Depth)
Body : The body is made of MS frame & PU foam is moulded over it.
Foam : Moulded foam has a density of 45kg/m³ (approx)
Packing Size : 2 pcs/box



STIFANO PU Chair

Code No.: LC-21



- Dimension : 675 X430 X390mm (Width X Height X Seat Depth)
Body : The body is made of MS frame & PU foam is moulded over it.
Foam : Moulded foam has a density of 45kg/m³ (approx)
Packing Size : 2 pcs/box

FERRERA PU Chair

Code No.: LC-22



- Dimension : 800 X 810 X 475mm (Width X Height X Seat Depth)
- Body : The body is made of MS frame & PU foam is moulded over it.
- Foam : Moulded foam has a density of 45kg/m³ (approx)
- Packing Size : 2 pcs/box



EGG PU Chair

Code No.: LC-23





Dimension : 770 X 630 X 480mm
(Width X Height X Seat Depth)
Body : The body is made of MS frame &
PU foam is moulded over it.
Foam : Moulded foam has a density of
45kg/m³ (approx)
Packing Size : 2 pcs/box

BARBEDOS PU Chair

Code No.: LC-24





- Dimension : 740 X 630 X 455mm (Width X Height X Seat Depth)
- Body : The body is made of MS frame & PU foam is moulded over it.
- Foam : Moulded foam has a density of 45kg/m³ (approx)
- Packing Size : 2 pcs/box

EECO PU Chair

Code No.: LC-25



- Dimension : 630 X 475 X 480mm
(Width X Height X Seat Depth)
- Body : The body is made of MS frame & PU
foam is moulded over it.
- Foam : Moulded foam has a density of 45kg/m³
(approx)
- Packing Size : 2 pcs/box



DIAMOND PU Chair

Code No.: LC-26



- Dimension : 620 X420 X420mm
(Width X Height X Seat Depth)
- Body : The body is made of MS frame & PU foam is moulded over it.
- Foam : Moulded foam has a density of 45kg/m³
(approx)
- Packing Size : 2 pcs/box

SMILE PU Chair

Code No.: LC-27



MADRAID PU Chair

Code No.: LC-28



- Dimension : 470X370 X400mm (Width X Height X Seat Depth)
- Body : The body is made of MS frame & PU foam is moulded over it.
- Foam : Moulded foam has a density of 45kg/m³ (approx)
- Packing Size : 3 pcs/box

SPRING PU Chair

Code No.: LC-29



- Dimension : 410 X 420 X 410mm (Width X Height X Seat Depth)
- Body : The body is made of MS frame & PU foam is moulded over it.
- Foam : Moulded foam has a density of 45kg/m³ (approx)
- Packing Size : 2 pcs/box

DROPLET PU Chair

Code No.: LC-30



Dimension : 460 X460 X380mm (Width X
Height X Seat Depth)
Body : The body is made of MS frame &
PU foam is moulded over it.
Foam : Moulded foam has a density of
45kg/m³ (approx)
Packing Size : 4 pcs/box



SIAM PU Chair

Code No.: LC-31





- Dimension : 610 X300 X470mm (Width X Height X Seat Depth)
Body : The body is made of MS frame & PU foam is moulded over it.
Foam : Moulded foam has a density of 45kg/m³ (approx)
Packing Size : 2 pcs/box

CH HIGH BACK Chair

Code No.: LC-32



- Dimension : 810 X750 X510mm
(Width X Height X Seat Depth)
- Body : The body is made of MS frame & PU foam is moulded over it.
- Foam : Moulded foam has a density of 45kg/m³ (approx)
- Packing Size : 2 pcs/box



CH LOW BACK PU Chair

Code No.: LC-33



Dimension : 810 X 565 X 510mm (Width X Height X Seat Depth)
Body : The body is made of MS frame & PU foam is moulded over it.
Foam : Moulded foam has a density of 45kg/m³ (approx)
Packing Size : 2 pcs/box

CONTINENTAL PU Chair

Code No.: LC-34

- Dimension : 890 X710 X510mm
(Width X Height X Seat Depth)
- Body : The body is made of MS frame &
PU foam is moulded over it.
- Foam : Moulded foam has a density of
45kg/m³ (approx)
- Packing Size : 2 pcs/box





YUVA BAR STOOL Chair

Code No.: LC-35





- Dimension : 510 X 270 X 390mm (Width X Height X Seat Depth)
- Body : The body is made of MS frame & PU foam is moulded over it.
- Foam : Moulded foam has a density of 45kg/m³ (approx)
- Packing Size : 5 pcs/box

MILANO PU Chair

Code No.: LC-36





Dimension : 460 X440 X430mm (Width X Height X Seat Depth)
Body : The body is made of MS frame & PU foam is moulded over it.
Foam : Moulded foam has a density of 45kg/m³ (approx)
Packing Size : 3 pcs/box



CUP PU Chair

Code No.: LC-37



- Dimension : 620 X 370 X 400mm (Width X Height X Seat Depth)
 Body : The body is made of MS frame & PU foam is moulded over it.
 Foam : Moulded foam has a density of 45kg/m³ (approx)
 Packing Size : 4 pcs/box

OVAL PU Chair

Code No.: LC-38



- Dimension : 625 X 300 X 440mm (Width X Height X Seat Depth)
 Body : The body is made of MS frame & PU foam is moulded over it.
 Foam : Moulded foam has a density of 45kg/m³ (approx)
 Packing Size : 4 pcs/box

TWO SEATER PU Chair

Code No.: LC-39



- Dimension : 795X400 X465mm (Width X Height X Seat Depth)
- Body : The body is made of MS frame & PU foam is moulded over it.
- Foam : Moulded foam has a density of 45kg/m³ (approx)
- Packing Size : 3 pcs/box

DUSTER PU Chair

Code No.: LC-40



- Dimension : 710 X 685 X 595mm (Width X Height X Seat Depth)
- Body : The body is made of MS frame & PU foam is moulded over it.
- Foam : Moulded foam has a density of 45kg/m³ (approx)
- Packing Size : 2 pcs/box

RIO PU Chair

Code No.: LC-41



Dimension : 460X520 X385mm (Width X Height X Seat Depth)
 Body : The body is made of MS frame & PU foam is moulded over it.
 Foam : Moulded foam has a density of 45kg/m³ (approx)
 Packing Size : 4 pcs/box

CLONE PU Chair

Code No.: LC-42



Dimension : 620 X 410 X 455mm
(Width X Height X Seat Depth)
Body : The body is made of MS frame & PU foam is moulded over it.
Foam : Moulded foam has a density of 45kg/m³ (approx)
Packing Size : 2 pcs/box





EVA PU Chair

Code No.: LC-43



- Dimension : 465 X 435 X 675mm (Width X Height X
Seat Depth)
- Body : The body is made of MS frame & PU foam
is moulded over it.
- Foam : Moulded foam has a density of 45kg/m³
(approx)
- Packing Size : 2 pcs/box



AIRPORT SOFA SEAT



- Dimension : 455 X 25 X 400mm (Width X Height X Seat Depth)
Body : The body is made of 10mm Plyboard & Integral PU foam is moulded over it.
Foam : Moulded foam has a density of 280kg/m³ (approx)
Packing Size : 10 pcs/box
Colour Options : Red, Blue, Black & (Any particular colour as per customer choice)

