



# PRODUCT CATALOGUE

---

2023

# COMPANY PROFILE

With great admiration, we present MK Industries, a visionary venture established in 2017 by the dynamic duo, Mr. Lalit Madan and Mr. Akhil Khatri. Drawing upon Mr. Lalit's extensive two-decade experience in the furniture industry and Mr. Akhil's relentless hard work and enthusiasm, they embarked on a mission to revolutionize the furniture industry.

We pride ourselves on our commitment to innovation and customer satisfaction. Our dedication has earned us a reputation for excellence within the industry. We are deeply grateful for the trust placed in us by our esteemed customers who have chosen MK Industries as their preferred partner. Our team is committed to providing customized solutions to meet your specific needs. Whether it's developing unique designs or molds tailored to your preferences, we go the extra mile to ensure your satisfaction.

At MK Industries, we specialize in crafting high-quality lounge chair shells with PU molded foam seats and backs, as well as airport seating shells, PU armrests, and adjustable armrests for both the furniture and automobile industries. Our range of furniture is not only economical but also incredibly comfortable and of the highest quality. We take pride in our ability to develop custom molds and designs to meet the specific needs of our clients. Leveraging our state-of-the-art high-pressure machines and skilled workforce, we are capable of delivering exceptional products that meet the highest standards of quality.

Join us on this exciting journey as we redefine the furniture industry with our exceptional products and unparalleled dedication to customer satisfaction. Together, let's create spaces that inspire comfort, style, and functionality like never before!

We invite you to explore our comprehensive catalog and envision how our products can fulfill all your demands.

Experience the SITZO Chairs difference today!



# DOLPHIN PU Chair

Code No.: LC-01

SIT  
FURNITURE ACCESSORIES



Dimension : 700 X 430 X 440mm  
(Width X Height X Seat Depth)  
Body : The body is made of MS frame & PU foam is moulded over it.  
Foam : Moulded foam has a density of 45kg/m<sup>3</sup> (approx)  
Packing Size : 2 pcs/box



## ZARA PU Chair

Code No.: LC-02



- Dimension : 605 X 405 X 435mm  
(Width X Height X Seat Depth)
- Body : The body is made of MS frame & PU foam is moulded over it.
- Foam : Moulded foam has a density of 45kg/m<sup>3</sup> (approx)
- Packing Size : 2 pcs/box



**JACK PU Chair**  
Code No.: LC-03



- Dimension : 605 X 390 X 430mm  
(Width X Height X Seat Depth)
- Body : The body is made of MS frame & PU foam is moulded over it.
- Foam : Moulded foam has a density of 45kg/m<sup>3</sup> (approx)
- Packing Size : 2 pcs/box







## BAR PU Chair

Code No.: LC-04



- Dimension : 420 X 180 X 340mm  
(Width X Height X Seat Depth)
- Body : The body is made of MS frame & PU foam is moulded over it.
- Foam : Moulded foam has a density of 45kg/m<sup>3</sup> (approx)
- Packing Size : 5 pcs/box

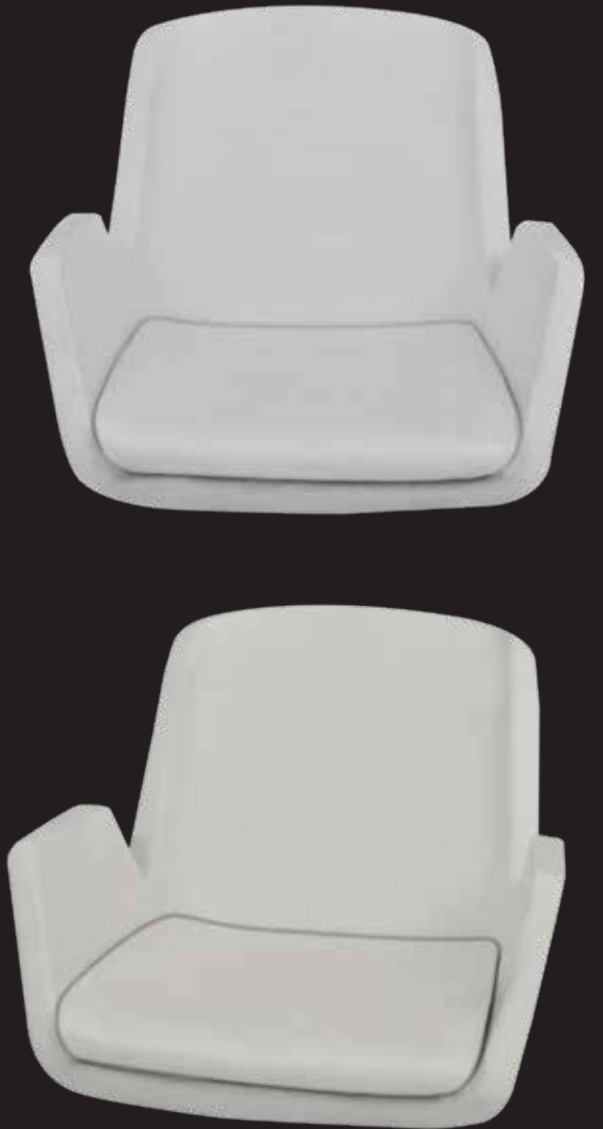


EXPERIENCE THE LUXURIOUS SEATING



## STAR PU Chair

Code No.: LC-05



- Dimension : 570 X 450 X 440mm  
(Width X Height X Seat Depth)
- Body : The body is made of MS frame & PU foam is moulded over it.
- Foam : Moulded foam has a density of 45kg/m<sup>3</sup> (approx)
- Packing Size : 2 pcs/box



## AMYRA PU Chair

Code No.: LC-06



- Dimension : 625 X 490 X 405mm  
(Width X Height X Seat Depth)
- Body : The body is made of MS frame & PU foam is moulded over it.
- Foam : Moulded foam has a density of 45kg/m<sup>3</sup> (approx)
- Packing Size : 2 pcs/box



## SINTARA PU Chair

Code No.: LC-07



- Dimension : 720 X 440 X 495mm  
(Width X Height X Seat Depth)
- Body : The body is made of MS frame & PU foam is moulded over it.
- Foam : Moulded foam has a density of 45kg/m<sup>3</sup> (approx)
- Packing Size : 2 pcs/box





# SAPPHIRE PU Chair

Code No.: LC-08



Dimension : 645 X 370 X 425mm  
(Width X Height X Seat Depth)  
Body : The body is made of MS frame & PU foam is  
moulded over it.  
Foam : Moulded foam has a density of 45kg/m<sup>3</sup> (approx)  
Packing Size : 2 pcs/box



## TOLIDO PU Chair

Code No.: LC-09



- Dimension : 750 X 475 X 475mm  
(Width X Height X Seat Depth)
- Body : The body is made of MS frame & PU foam is moulded over it.
- Foam : Moulded foam has a density of 45kg/m<sup>3</sup> (approx)
- Packing Size : 2 pcs/box





## LUV PU Chair

Code No.: LC-10



- Dimension : 790 X 400 X 515mm  
(Width X Height X Seat Depth)
- Body : The body is made of MS frame & PU foam is moulded over it.
- Foam : Moulded foam has a density of 45kg/m<sup>3</sup> (approx)
- Packing Size : 2 pcs/box



## TERRANO PU Chair

Code No.: LC-11



- Dimension : 630 X 435 X 445mm  
(Width X Height X Seat Depth)
- Body : The body is made of MS frame & PU foam is moulded over it.
- Foam : Moulded foam has a density of 45kg/m<sup>3</sup> (approx)
- Packing Size : 2 pcs/box



# KING PU Chair

Code No.: LC-12



Dimension : 680 X 600 X 425mm  
(Width X Height X Seat Depth)  
Body : The body is made of MS frame & PU foam is moulded over it.  
Foam : Moulded foam has a density of 45kg/m<sup>3</sup> (approx)  
Packing Size : 3 pcs/box



## QUBA PU Chair

Code No.: LC-13



Dimension : 730 X 440 X 505mm  
(Width X Height X Seat Depth)  
Body : The body is made of MS frame & PU foam is  
moulded over it.  
Foam : Moulded foam has a density of 45kg/m<sup>3</sup> (approx)  
Packing Size : 2 pcs/box







## DAYTON PU Chair

Code No.: LC-14



- Dimension : 780 X 390 X 485mm  
(Width X Height X Seat Depth)
- Body : The body is made of MS frame & PU foam is moulded over it.
- Foam : Moulded foam has a density of 45kg/m<sup>3</sup> (approx)
- Packing Size : 2 pcs/box

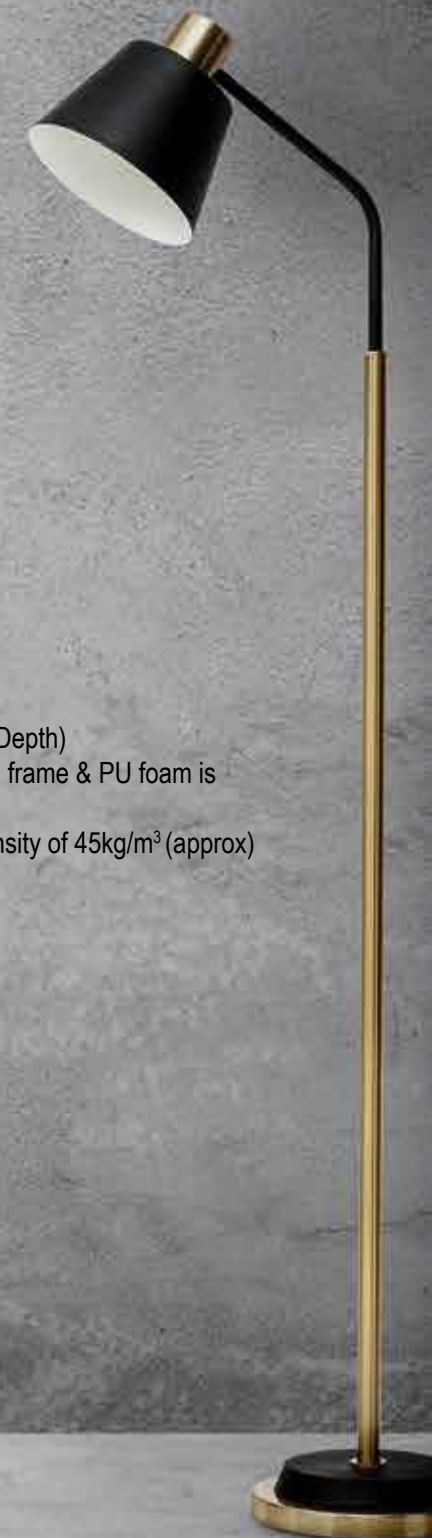


# SHINE PU Chair

Code No.: LC-15



Dimension : 630 X 385 X 440mm  
(Width X Height X Seat Depth)  
Body : The body is made of MS frame & PU foam is moulded over it.  
Foam : Moulded foam has a density of 45kg/m<sup>3</sup> (approx)  
Packing Size : 2 pcs/box





# BRIDGE PU Chair

Code No.: LC-16



Dimension : 570 X 390 X 455mm  
(Width X Height X Seat Depth)  
Body : The body is made of MS frame & PU foam is  
moulded over it.  
Foam : Moulded foam has a density of 45kg/m<sup>3</sup> (approx)  
Packing Size : 2 pcs/box

## SYDNEY L/B & H/B PU Chair



Code No.: LC-17

Code No.: LC-18



Dimension : 670 X 620 X 415mm  
(Width X Height X Seat Depth)  
Body : The body is made of MS frame & PU foam is moulded over it.  
Foam : Moulded foam has a density of 45kg/m<sup>3</sup> (approx)  
Packing Size : 2 pcs/box



Dimension : 690 X 440 X 435mm  
(Width X Height X Seat Depth)  
Body : The body is made of MS frame & PU foam is moulded over it.  
Foam : Moulded foam has a density of 45kg/m<sup>3</sup> (approx)  
Packing Size : 2 pcs/box



# QUADRO PU Chair

Code No.: LC-19



- Dimension : 625 X 405 X 435mm  
(Width X Height X Seat Depth)
- Body : The body is made of MS frame & PU foam is moulded over it.
- Foam : Moulded foam has a density of 45kg/m<sup>3</sup> (approx)
- Packing Size : 2 pcs/box



## HEXA PU Chair

Code No.: LC-20

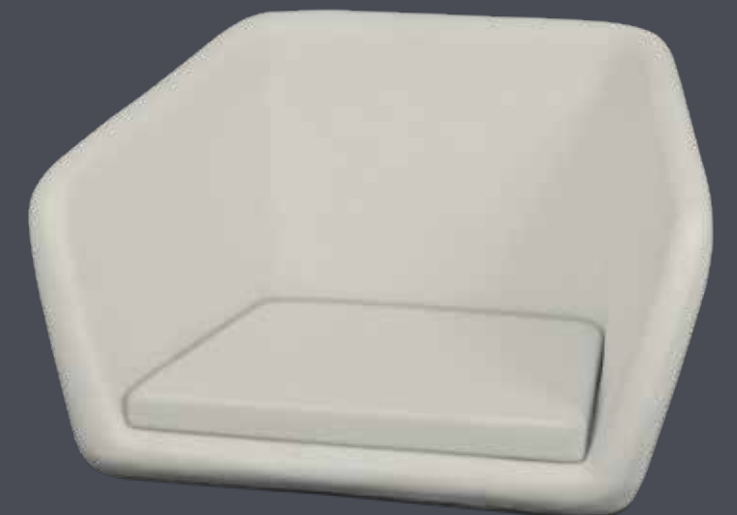


Dimension : 840 X 410 X 475mm  
(Width X Height X Seat Depth)  
Body : The body is made of MS frame &  
PU foam is moulded over it.  
Foam : Moulded foam has a density of  
45kg/m<sup>3</sup> (approx)  
Packing Size : 2 pcs/box



## STIFANO PU Chair

Code No.: LC-21



- Dimension : 675 X 430 X 390mm  
(Width X Height X Seat Depth)
- Body : The body is made of MS frame & PU foam is moulded over it.
- Foam : Moulded foam has a density of 45kg/m<sup>3</sup> (approx)
- Packing Size : 2 pcs/box



## FERRERA PU Chair

Code No.: LC-22



- Dimension : 800 X 810 X 475mm  
(Width X Height X Seat Depth)
- Body : The body is made of MS frame & PU  
foam is moulded over it.
- Foam : Moulded foam has a density of 45kg/  
m<sup>3</sup> (approx)
- Packing Size : 2 pcs/box





# EGG PU Chair

Code No.: LC-23



Dimension : 770 X 630 X 480mm  
(Width X Height X Seat Depth)  
Body : The body is made of MS frame &  
PU foam is moulded over it.  
Foam : Moulded foam has a density of  
45kg/m<sup>3</sup> (approx)  
Packing Size : 2 pcs/box



# BARBEDOS PU Chair

Code No.: LC-24



Dimension : 740 X 630 X 455mm  
(Width X Height X Seat Depth)  
Body : The body is made of MS frame & PU foam is moulded over it.  
Foam : Moulded foam has a density of 45kg/m<sup>3</sup> (approx)  
Packing Size : 2 pcs/box



# EECO PU Chair

Code No.: LC-25



- Dimension : 630 X 475 X 480mm  
(Width X Height X Seat Depth)
- Body : The body is made of MS frame & PU  
foam is moulded over it.
- Foam : Moulded foam has a density of 45kg/m<sup>3</sup>  
(approx)
- Packing Size : 2 pcs/box





## DIAMOND PU Chair

Code No.: LC-26



Dimension : 620 X 420 X 420mm  
(Width X Height X Seat Depth)  
Body : The body is made of MS frame & PU foam  
is moulded over it.  
Foam : Moulded foam has a density of 45kg/m<sup>3</sup>  
(approx)  
Packing Size : 2 pcs/box



## MADRAID PU Chair

Code No.: LC-28



Dimension : 470 X 370 X 400mm  
(Width X Height X Seat Depth)  
Body : The body is made of MS frame & PU foam is moulded over it.  
Foam : Moulded foam has a density of 45kg/m<sup>3</sup> (approx)  
Packing Size : 3 pcs/box



## SMILE PU Chair

Code No.: LC-27



## SPRING PU Chair

Code No.: LC-29



Dimension : 410 X 420 X 410mm  
(Width X Height X Seat Depth)  
Body : The body is made of MS frame & PU foam is moulded over it.  
Foam : Moulded foam has a density of 45kg/m<sup>3</sup> (approx)  
Packing Size : 2 pcs/box



## DROPLET PU Chair

Code No.: LC-30

Dimension : 460 X 460 X 380mm  
(Width X Height X Seat Depth)  
Body : The body is made of MS frame &  
PU foam is moulded over it.  
Foam : Moulded foam has a density of  
45kg/m<sup>3</sup> (approx)  
Packing Size : 4 pcs/box





## SIAM PU Chair

Code No.: LC-31



- Dimension : 610 X 300 X 470mm  
(Width X Height X Seat Depth)
- Body : The body is made of MS frame & PU foam is moulded over it.
- Foam : Moulded foam has a density of 45kg/m<sup>3</sup> (approx)
- Packing Size : 2 pcs/box



## CH HIGH BACK Chair

Code No.: LC-32



## CH LOW BACK PU Chair

Code No.: LC-33



- Dimension : 810 X 750 X 510mm  
(Width X Height X Seat Depth)
- Body : The body is made of MS frame & PU foam is moulded over it.
- Foam : Moulded foam has a density of 45kg/m<sup>3</sup> (approx)
- Packing Size : 2 pcs/box



- Dimension : 810 X 565 X 510mm  
(Width X Height X Seat Depth)
- Body : The body is made of MS frame & PU foam is moulded over it.
- Foam : Moulded foam has a density of 45kg/m<sup>3</sup> (approx)
- Packing Size : 2 pcs/box





# CONTINENTAL PU Chair

Code No.: LC-34

- Dimension : 890 X 710 X 510mm  
(Width X Height X Seat Depth)
- Body : The body is made of MS frame &  
PU foam is moulded over it.
- Foam : Moulded foam has a density of  
45kg/m<sup>3</sup> (approx)
- Packing Size : 2 pcs/box



# YUVA BAR STOOL Chair

Code No.: LC-35



Dimension : 510 X 270 X 390mm  
(Width X Height X Seat Depth)  
Body : The body is made of MS frame & PU foam is moulded over it.  
Foam : Moulded foam has a density of 45kg/m<sup>3</sup> (approx)  
Packing Size : 5 pcs/box



# MILANO PU Chair

Code No.: LC-36



Dimension : 460 X 440 X 430mm  
(Width X Height X Seat Depth)  
Body : The body is made of MS frame & PU foam is  
moulded over it.  
Foam : Moulded foam has a density of 45kg/m<sup>3</sup> (approx)  
Packing Size : 3 pcs/box





## CUP PU Chair

Code No.: LC-37



Dimension : 620 X 370 X 400mm  
(Width X Height X Seat Depth)  
Body : The body is made of MS frame & PU foam is moulded over it.  
Foam : Moulded foam has a density of 45kg/m<sup>3</sup> (approx)  
Packing Size : 4 pcs/box

## OVAL PU Chair

Code No.: LC-38



Dimension : 625 X 300 X 440mm  
(Width X Height X Seat Depth)  
Body : The body is made of MS frame & PU foam is moulded over it.  
Foam : Moulded foam has a density of 45kg/m<sup>3</sup> (approx)  
Packing Size : 4 pcs/box

## TWO SEATER PU Chair

Code No.: LC-39



Dimension : 795 X 400 X 465mm  
(Width X Height X Seat Depth)  
Body : The body is made of MS frame & PU foam is moulded over it.  
Foam : Moulded foam has a density of 45kg/m<sup>3</sup> (approx)  
Packing Size : 3 pcs/box

## DUSTER PU Chair

Code No.: LC-40



Dimension : 710 X 685 X 595mm  
(Width X Height X Seat Depth)  
Body : The body is made of MS frame & PU foam is moulded over it.  
Foam : Moulded foam has a density of 45kg/m<sup>3</sup> (approx)  
Packing Size : 2 pcs/box



## RIO PU Chair

Code No.: LC-41



Dimension : 460 X 520 X 385mm  
(Width X Height X Seat Depth)  
Body : The body is made of MS frame & PU foam is moulded over it.  
Foam : Moulded foam has a density of 45kg/m<sup>3</sup> (approx)  
Packing Size : 4 pcs/box

## CLONE PU Chair

Code No.: LC-42



Dimension : 620 X 410 X 455mm  
(Width X Height X Seat Depth)  
Body : The body is made of MS frame & PU foam is moulded over it.  
Foam : Moulded foam has a density of 45kg/m<sup>3</sup> (approx)  
Packing Size : 2 pcs/box



## EVA PU Chair

Code No.: LC-43



- Dimension : 465 X 435 X 675mm  
(Width X Height X Seat Depth)
- Body : The body is made of MS frame & PU foam  
is moulded over it.
- Foam : Moulded foam has a density of 45kg/m<sup>3</sup>  
(approx)
- Packing Size : 2 pcs/box



## AIRPORT SOFA SEAT



- Dimension : 455 X 25 X 400mm  
(Width X Height X Seat Depth)
- Body : The body is made of 10mm Plyboard & Intigral PU foam is moulded over it.
- Foam : Moulded foam has a density of 280kg/m<sup>3</sup> (approx)
- Packing Size : 10 pcs/box
- Colour Options : Red, Blue, Black & (Any particular colour as per customer choice)



A. Seating 01

- Dimension : 450 X 380 X 400mm  
(Width X Height X Seat Depth)
- Body : The body is made of MS frame & Intigral PU foam is moulded over it.
- Foam : Moulded foam has a density of 280kg/m<sup>3</sup> (approx)
- Packing Size : 5 pcs/box
- Colour Options : Red, Blue, Black & (Any particular colour as per customer choice)



A. Seating 02

- Dimension : 450 X 380 X 400mm  
(Width X Height X Seat Depth)
- Body : The body is made of MS frame & Intigral PU foam is moulded over it.
- Foam : Moulded foam has a density of 280kg/m<sup>3</sup> (approx)
- Packing Size : 5 pcs/box
- Colour Options : Red, Blue, Black & (Any particular colour as per customer choice)



## **MK INDUSTRIES**

93/94/1, 93/94/2 Gali No.1, Mundka Udyog Nagar, Delhi-110041

M.: 9958600377, 9991410765

Email : [mkindustries.2917@gmail.com](mailto:mkindustries.2917@gmail.com)

Website : [www.sitzochairparts.com](http://www.sitzochairparts.com)